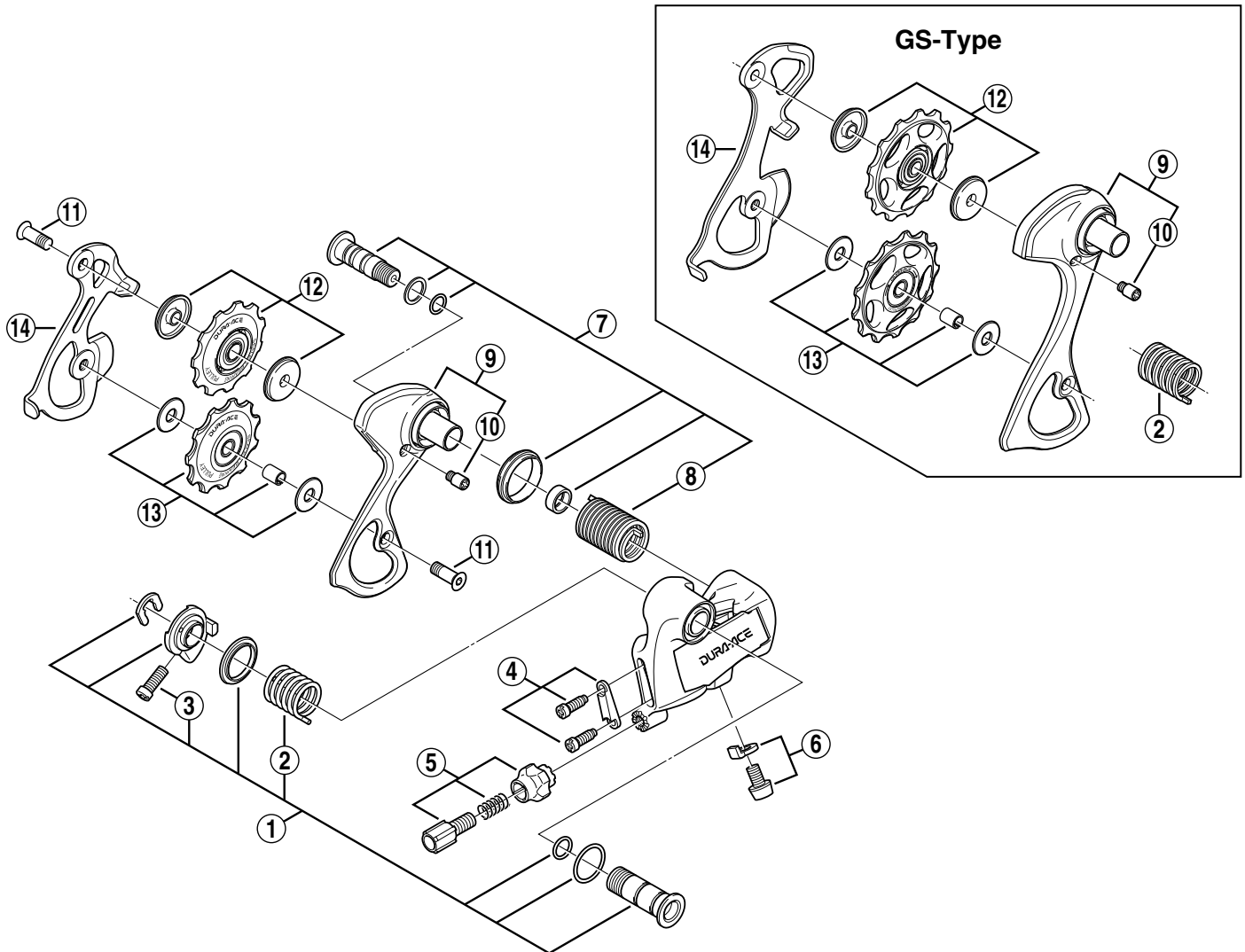


DURA-ACE Rear Derailleur (9-Speed)

**RD-7700-SS** Short Cage

**RD-7700-GS** Long Cage



Q'TY	ITEM NO.	SHIMANO CODE NO.	DESCRIPTION
	* 1	<b>Y-5TJ 98010</b>	B-Axle Assembly (SS-Type)
		<b>Y-5TJ 98110</b>	B-Axle Assembly (GS-Type)
	* 2	<b>Y-5TJ 27000</b>	B-Tension Spring (SS-Type)
		<b>Y-5TJ 30000</b>	B-Tension Spring (GS-Type)
	3	<b>Y-53M21000</b>	B-Tension Adjusting Screw (M4 x 12)
	4	<b>Y-5TJ 98020</b>	Stroke Adjusting Screws (M4 x 11.5) & Plate
	5	<b>Y-5TJ 98030</b>	Cable Adjusting Bolt Unit
	6	<b>Y-5TJ 98040</b>	Cable Fixing Bolt (M5 x 8) & Plate
	7	<b>Y-5TJ 98050</b>	Plate Axle Assembly
	8	<b>Y-560 15100</b>	P-Tension Spring
	* 9	<b>Y-5TJ 98060</b>	Outer Plate (SS-Type) & Plate Stopper Pin
		<b>Y-5TJ 98120</b>	Outer Plate (GS-Type) & Plate Stopper Pin
	10	<b>Y-559 19000</b>	Plate Stopper Pin
	11	<b>Y-53M24000</b>	Pulley Bolt
	* 12	<b>Y-5TJ 98080</b>	Guide Pulley Unit (SS-Type)
		<b>Y-5TJ 98140</b>	Guide Pulley Unit (GS-Type)
	* 13	<b>Y-5TJ 98090</b>	Tension Pulley Unit (SS-Type)
		<b>Y-5TJ 98160</b>	Tension Pulley Unit (GS-Type)
	* 14	<b>Y-5TJ 08000</b>	Inner Plate (SS-Type)
		<b>Y-5TJ 09000</b>	Inner Plate (GS-Type)